



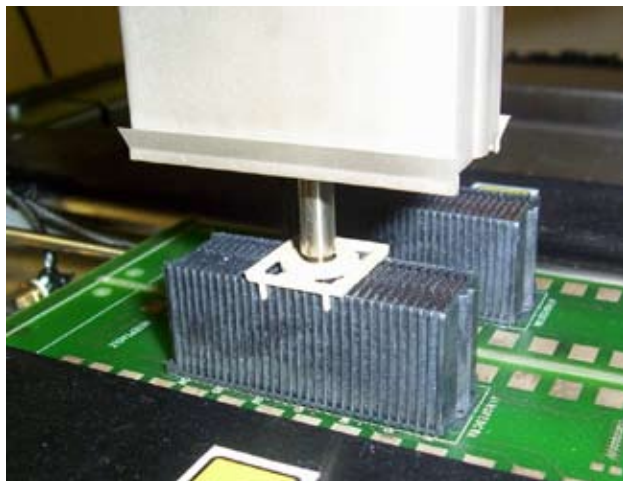
**Summit 1100**  
Semi-Automatic Rework System

## SRT SERIES

### **Summit 1100** Semi-Automatic Rework System

VJ Technologies offers the Summit 1100 Semi-Automatic Rework system. Developed by SRT and further refined by VJ Technologies, the 1100 is specifically designed to meet the needs of users who demand high performance and advanced process control. The Summit 1100 Rework system provides some of the most advanced features to address difficult Rework challenges.

Proprietary SierraMate™ Windows® based software provides an easy to use "1-2-3-Go" graphical user interface, featuring intuitive programming and Auto Profile. The 1100 is "Production Ready", configurable with an available High Resolution feature, providing a high performance at an affordable price.



**Connector Rework**

#### **Key Features**

<b>Max. Board Size</b>	18"X 22" (455mm X 560mm) standard
	22" X30" (560mm X 760mm) optional

<b>Min. Component Size</b>	0.020" (0.5mm)
----------------------------	----------------

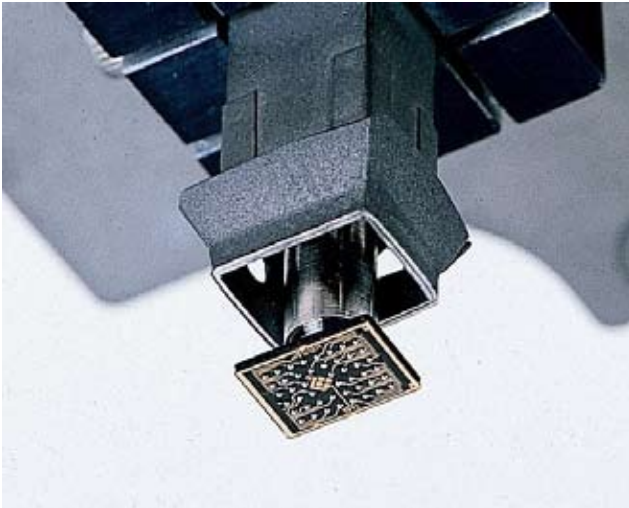
<b>Placement</b>	0.001" (25μ) mean + 3σ
------------------	------------------------

<b>Compliance</b>	CE mark
-------------------	---------

<b>Top Heater</b>	1.6kW Focused Convection
-------------------	--------------------------

<b>Bottom Heater</b>	4.0kW Convection Plenum
----------------------	-------------------------

<b>Field-of-View</b>	2.0" (50mm) Square
----------------------	--------------------



**Chip-Scale Rework**

The Summit 1100 has long been regarded as the “work-horse” for Surface Mount Rework and is the standard against which all others are measured. It embodies features and benefits that have been developed to satisfy the demanding requirements of the Electronics Assembly industry, including the essential Lead Free capability.

The Summit 1100 incorporates unique features such as Auto Profile, Programmable Pick and Place Force with Component Height Sensing, Independent Top Heater and Pick-up Tube and Proprietary Split Imaging. These, together with precision placement capability, Optical/Digital Zoom, and Automated Data/Event Logging account for its continuing popularity.

A variety of optional features such as Micrometer X-Y Table Fine Adjust, High Power (2.4 kW) Top Heater, Solder Scavenging and High Resolution Package are available to handle more challenging applications.

---

## VJ Technologies Offices

**234 Taylor Street  
Littleton MA 01460**

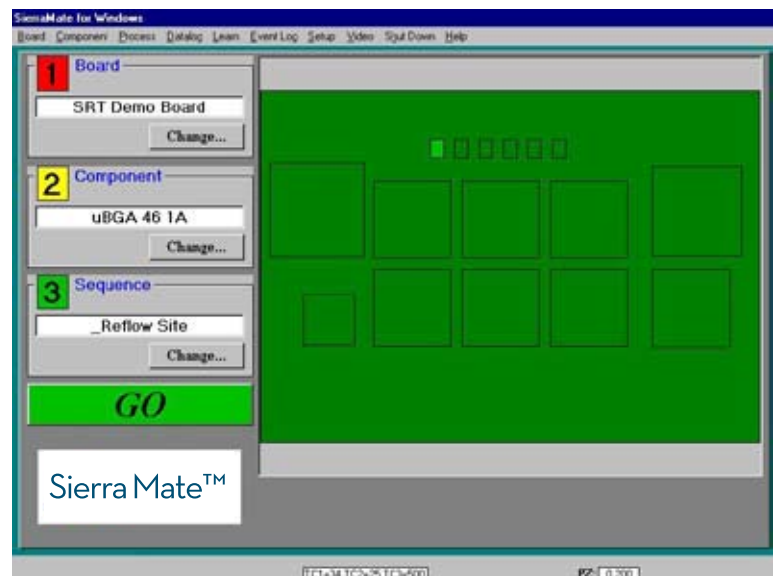
Bohemia NY  
East Haven CT  
Buford GA  
San Diego CA  
Monterey, Mexico  
Paris, France  
Stuttgart, Germany  
Bangkok, Thailand  
Bengaluru, India  
Suzhou, China

**www.vjt.com**

**Email** [electronixsales@vjt.com](mailto:electronixsales@vjt.com)

**Tel** +1 631 589 8800 x1247

**Fax** +1 978 486 4550



**1-2-3-Go SierraMate™ Graphical User Interface**



**VJ TECHNOLOGIES**

***Because Performance Matters!***