



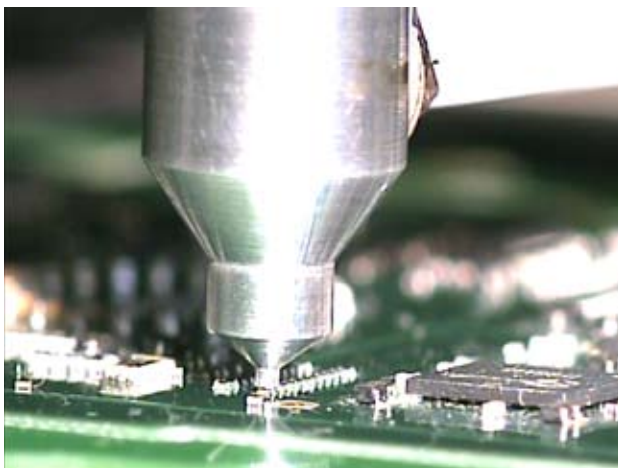
**Summit 2200**  
Automatic Rework System

## SRT SERIES

### **Summit 2200** Automatic Rework System

VJ Technologies delivers the Summit 2200 highly Automated Rework system. Developed by SRT and further refined by VJ Technologies, the 2200 is the industry's most advanced Rework system. The Summit 2200 Rework system provides programmable features tailored specifically to address high volume Rework.

Proprietary SierraMate™ Windows® based software provides an easy to use "1-2-3-Go" graphical user interface, featuring intuitive programming and Auto Profile. The 2200 is "production ready" with many standard features, providing superior value and superior performance.



**01005 Rework**

#### **Key Features**

**Max. Board Size** 18"X 22" (455mm X 560mm)

**Min. Component Size** 0.005" (0.12mm)

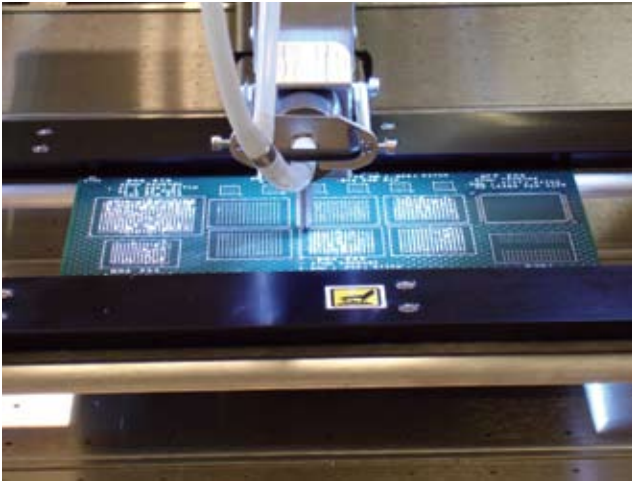
**Placement** 0.0005" (12 $\mu$ ) mean + 3 $\sigma$

**Compliance** CE mark

**Top Heater** 1.6kW Focused Convection

**Bottom Heater** 4.0kW Convection Plenum

**Field-of-View** 2.0" (50mm) Square



**Solder Scavenger with Dynamic Height Sensing  
Automatic *non-contact* solder removal**

The Summit 2200 is the pinnacle of high volume Surface Mount Rework technology. It incorporates not only the well established features and benefits, common to all the Summit systems but introduces state-of-the-art innovations to address high volume, Lead-Free Rework.

Advanced features such as Auto Profile, Programmable Pick and Place Force with Component Height Sensing, Independent Top Heater and Pick-up Tube, Proprietary Split Imaging together with precision placement capability, Optical/Digital Zoom and Automated Data/Event Logging continue to satisfy the demanding requirements of the Electronics Assembly industry. Complex components and assemblies benefit from the increased functionality and automation provided by the Summit 2200.

The Summit 2200 incorporates dual heads (Rework and Scavenger), providing maximum thru-put and minimum thermal cycles.

---

## VJ Technologies Offices

**234 Taylor Street  
Littleton MA 01460**

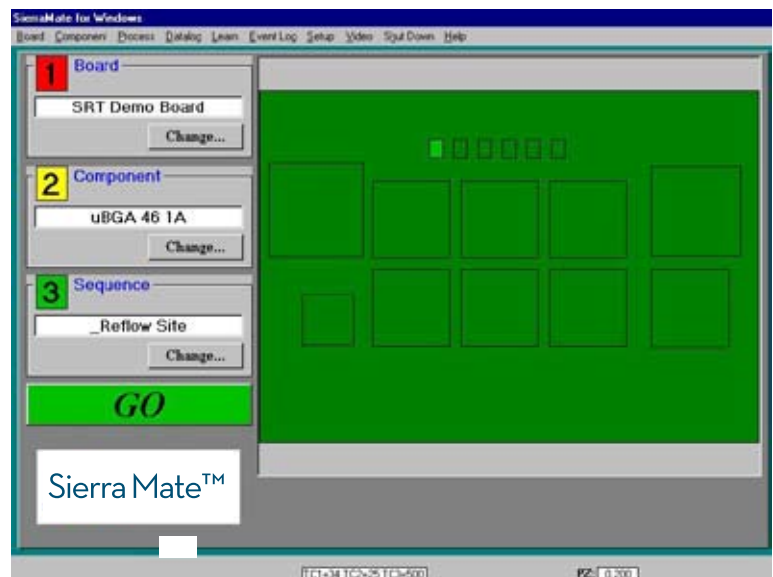
Bohemia NY  
East Haven CT  
Buford GA  
San Diego CA  
Monterey, Mexico  
Paris, France  
Stuttgart, Germany  
Bangkok, Thailand  
Bengaluru, India  
Suzhou, China

**www.vjt.com**

**Email** [electronixsales@vjt.com](mailto:electronixsales@vjt.com)

**Tel** +1 631 589 8800 x1247

**Fax** +1 978 486 4550



**1-2-3-Go SierraMate™ Graphical User Interface**



**VJ TECHNOLOGIES**

***Because Performance Matters!***